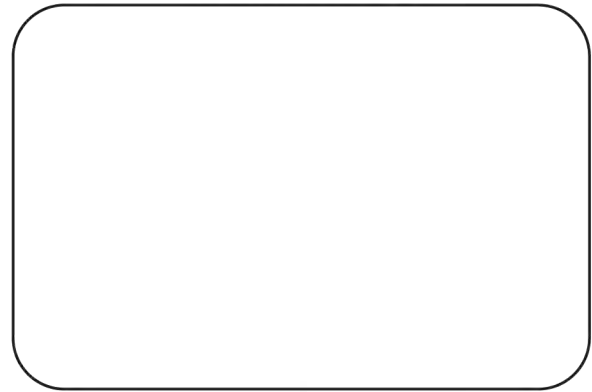


Distributed By



## Spring Loaded Direct Acting & Relief Valves



Master Distributor  
for



# P133 Pressure Regulator

## Applications

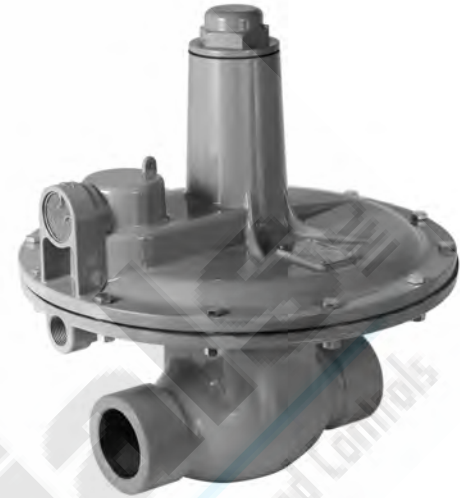
The P133 is a direct operated pressure reducing regulator used in commercial and industrial applications such as furnaces and burners where accuracy and sensitivity is critical.

The P133 regulator utilizes a balanced diaphragm design that provides for sensitivity and accuracy.

The P133 is available in a low pressure or high pressure model and a broad range of outlet spring ranges. The P133 is also suitable in pressure monitoring applications.

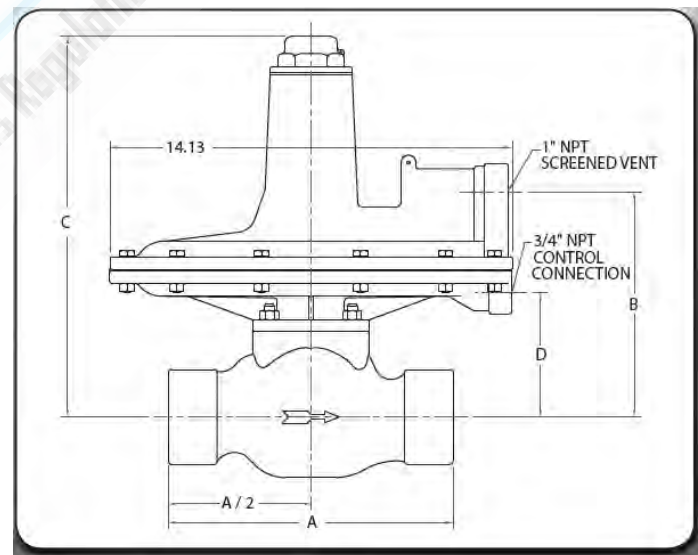
Maximum Inlet	133L 60 PSI	133H 125 PSI
Maximum Emergency Outlet	2 PSI L Version 10 PSI H Version	
Port Sizes	2" NPT	
Restrictor Collars	25%	
	40%	
	60%	
End Connections	2" NPT (Standard)	
	125 FF Flange (Iron only)	
	150 RF Flange (Steel only)	
Temperature Range	-40°F - 200°F	
	-40°C - 93°C	
Approximate Weight	35 lbs. (15.9 kg)	

Model	Spring Ranges wc or PSI	Spring Color	Part Number
P133 L & H	2" – 4" wc	Brown	655-697-002
	3.5" – 6" wc	Red	655-697-003
	5" – 9" wc	Black	655-697-004
	8.5" – 18" wc	White	655-697-005
	14" – 28" wc	Green	655-697-006
	0.75 – 2 PSI	Dark Blue	655-697-007
P133 H Version Only	1.5 – 3.25 PSI	Orange	655-697-008
	2 – 5 PSI	Yellow	655-730-000
	5 – 10 PSI	Blue Stripe	655-659-004



**P133 Dimensions**

A			B	C	D		
2" NPT	125 FF	150 RF			2" NPT	125 FF	150 RF
10.0	10.0	10.0	7.91	13.36	4.36	4.36	4.36



# Capacity Table

## P133L Unrestricted Flow Capacities in Thousands of SCFH

Outlet Pressure Setting and Outlet Pressure Range											
Inlet Pressure	4" wc 2" - 4" wc	6" wc 3.5" - 6" wc	7" wc 5" - 9" wc	14" wc 8.5" - 18" wc		14" wc 14" - 28" wc		1 psig 14" - 28" wc		2 psig 0.75 - 2 psig	
	1" wc Droop SCFH	1" wc Droop SCFH	1" wc Droop SCFH	1" wc Droop SCFH	2" wc Droop SCFH	1" wc Droop SCFH	2" wc Droop SCFH	10% Droop SCFH	20% Droop SCFH	10% Droop SCFH	20% Droop SCFH
1	14	13	12	5	8.4						
2	20.8	20	17	8.2	15.2			11.5	16		
3	26	24.5	21	12	19.5			15.5	21.5	12.5	18.5
5	35	33	32	16	28	14	23	24	31.5	20.5	28
10	52	52	48	34	45	26	38	37.5	44	38	46
20	78	77	79	69	76	60	69	70	77	62	76
30	101	100	100	91	97	87	93	90	101	87	101
40	124	122	124	109	116	107	115	110	122	105	121
50	146	144	145	130	136	132	137	127	145	124	145
60	170	168	166	155	161	152	158	149	167	145	170

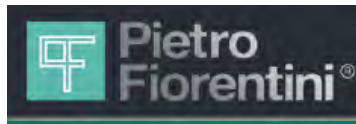
## P133H Unrestricted Flow Capacities in Thousands of SCFH

Outlet Pressure Setting and Outlet Pressure Range										
Inlet Pressure	3 psig 1.5 - 3 psig		2 psig 2 - 5 psig		5 psig 2 - 5 psig		5 psig 5 - 10 psig		10 psig 5 - 10 psig	
	10% Droop SCFH	20% Droop SCFH	10% Droop SCFH	20% Droop SCFH	10% Droop SCFH	20% Droop SCFH	10% Droop SCFH	20% Droop SCFH	10% Droop SCFH	20% Droop SCFH
3			6.5	11.5						
5	14	22	11	18						
7	21.5	31	13	22	15.5	24	9	15		
10	28	42	15	27	24	35	14	22		
15	40	57	25.5	39	35	51	19	31.5	21	35
20	52	72	35	52	46	67	24	41	31	51
30	76	96	49	73	68	95	35	58	44	74
40	98	119	66	97	88	117	44	73	56	97
50	118	141	84	112	103	138	57	89	74	117
60	136	165	104	132	122	156	65	106	91	136





Natural and Propane Gas Regulation, Measurement and Controls



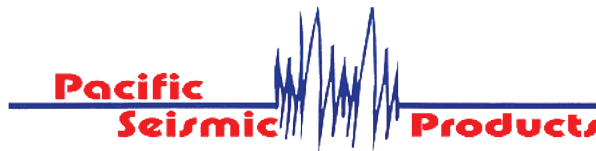
CSA 6.22a -2005 and ANSI Z21.80a Approved  
Ventless Indoor Applications



Regulators for Natural & Propane Gas  
High Pressure Regulators up to 5000 PSI  
Filter Regulators & Gauges

## MILLIKEN

Lubricated two way & three way Plug Valves  
CSA/CGA Approved



Seismic "Earthquake" Valves  
available from 3/4" to 8"

## METERS

Diaphragm, Rotary, Turbine,  
Flange Kits and Accessories

Manufacturer standard warranty applies. For a copy please contact us.